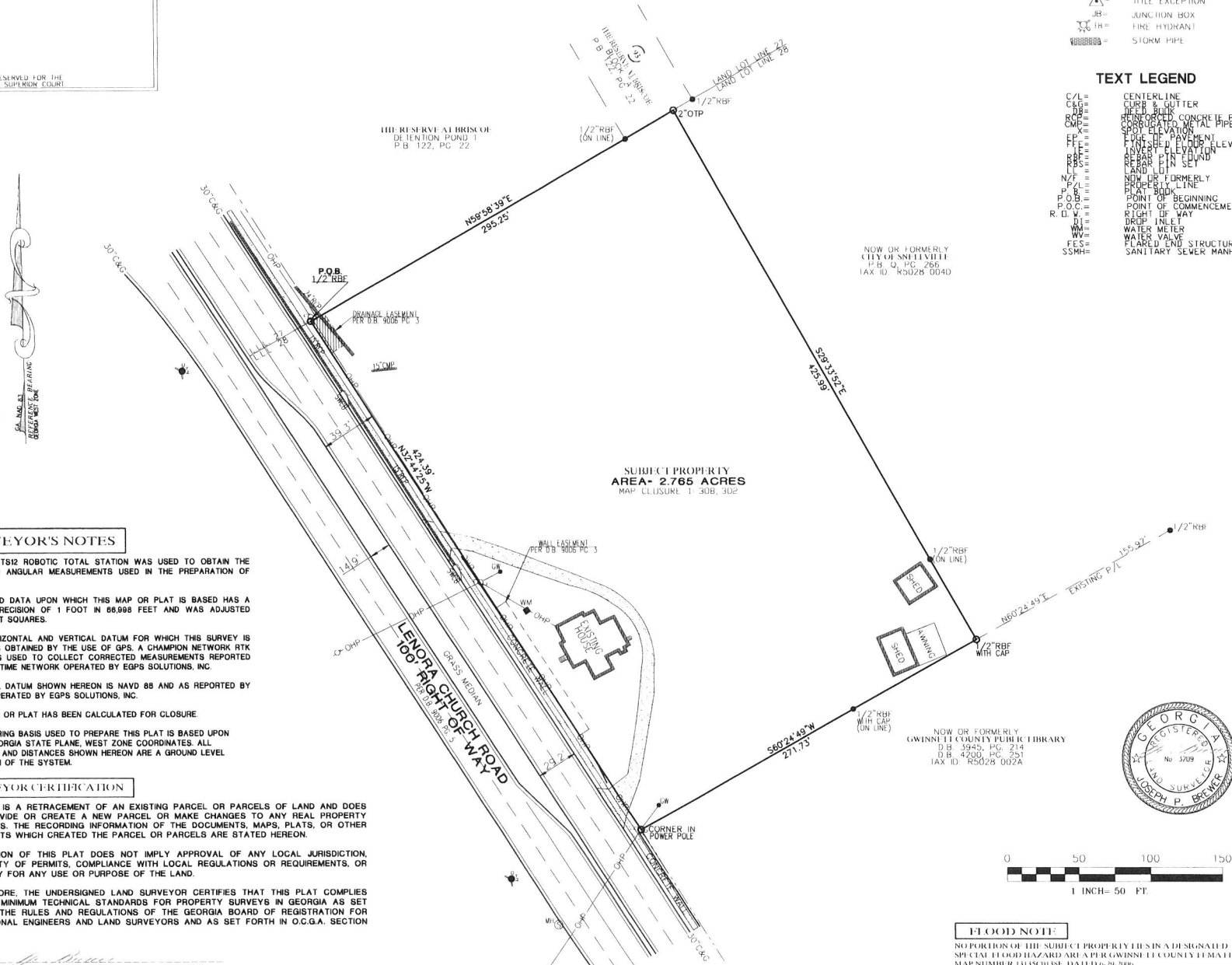


BOUNDARY SURVEY OF AN EXISTING TAX PARCEL
LAND LOT 28 OF THE 5TH LAND DISTRICT
CITY OF SNELLVILLE, GWINNETT COUNTY, GEORGIA
REFERENCE DEED: D.B. 14430 PG. 71
EXISTING TAX PARCEL: R5028 001

- SYMBOL LEGEND**
- IP = LIGHT POLE
 - OP = POWER POLE
 - ⊙ = TRAFFIC POLE
 - ⊙ M.H. = SANITARY SEWER MANHOLE
 - ⊙ DW.B. = DOUBLE WING LATCH BASIN
 - ⊙ SW.C.B. = SINGLE WING LATCH BASIN
 - ⊙ T.R.A.N. = TRANSFORMER ELECTRIC
 - X — = FENCE LINE
 - △ = TILE EXCEPTION
 - ⊙ J.B. = JUNCTION BOX
 - ⊙ F.H. = FIRE HYDRANT
 - ⊙ S.S.M.H. = STORM PIPE

- TEXT LEGEND**
- C/L = CENTERLINE
 - C/G/G = CURB & GUTTER
 - R/O = REINFORCED CONCRETE PIPE
 - C/M/P = CORRUGATED METAL PIPE
 - P/P = POLYESTER PAVEMENT
 - T/P = TRIP PAVEMENT ELEVATION
 - R/O = REINFORCED CONCRETE
 - R/O = REINFORCED CONCRETE
 - N/F = NOT FORMERLY
 - P.O.B. = POINT OF BEGINNING
 - P.O.C. = POINT OF COMMENCEMENT
 - R.O.W. = RIGHT OF WAY
 - D.I. = DROP INLET
 - W.M. = WATER METER
 - W.V. = WATER VALVE
 - F.E.S. = FLOORED END STRUCTURE
 - S.S.M.H. = SANITARY SEWER MANHOLE

THIS BLOCK RESERVED FOR THE CLERK OF THE SUPERIOR COURT



SURVEYOR'S NOTES

1. A LEICA TS12 ROBOTIC TOTAL STATION WAS USED TO OBTAIN THE LINEAR AND ANGULAR MEASUREMENTS USED IN THE PREPARATION OF THIS PLAT.
2. THE FIELD DATA UPON WHICH THIS MAP OR PLAT IS BASED HAS A CLOSURE PRECISION OF 1 FOOT IN 88,998 FEET AND WAS ADJUSTED USING LEAST SQUARES.
3. THE HORIZONTAL AND VERTICAL DATUM FOR WHICH THIS SURVEY IS BASED WAS OBTAINED BY THE USE OF GPS. A CHAMPION NETWORK RTK ROVER WAS USED TO COLLECT CORRECTED MEASUREMENTS REPORTED BY A REAL TIME NETWORK OPERATED BY EGPS SOLUTIONS, INC.
4. VERTICAL DATUM SHOWN HEREON IS NAVD 88 AND AS REPORTED BY THE RTN OPERATED BY EGPS SOLUTIONS, INC.
5. THIS MAP OR PLAT HAS BEEN CALCULATED FOR CLOSURE.
6. THE BEARING BASIS USED TO PREPARE THIS PLAT IS BASED UPON NAD-83, GEORGIA STATE PLANE, WEST ZONE COORDINATES. ALL DIRECTIONS AND DISTANCES SHOWN HEREON ARE A GROUND LEVEL PROJECTION OF THE SYSTEM.

SURVEYOR CERTIFICATION

THIS PLAT IS A RETRACEMENT OF AN EXISTING PARCEL OR PARCELS OF LAND AND DOES NOT SUBDIVIDE OR CREATE A NEW PARCEL OR MAKE CHANGES TO ANY REAL PROPERTY BOUNDARIES. THE RECORDING INFORMATION OF THE DOCUMENTS, MAPS, PLATS, OR OTHER INSTRUMENTS WHICH CREATED THE PARCEL OR PARCELS ARE STATED HEREON.

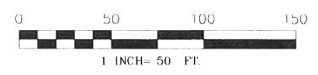
RECORDATION OF THIS PLAT DOES NOT IMPLY APPROVAL OF ANY LOCAL JURISDICTION, AVAILABILITY OF PERMITS, COMPLIANCE WITH LOCAL REGULATIONS OR REQUIREMENTS, OR SUITABILITY FOR ANY USE OR PURPOSE OF THE LAND.

FURTHERMORE, THE UNDERSIGNED LAND SURVEYOR CERTIFIES THAT THIS PLAT COMPLIES WITH THE MINIMUM TECHNICAL STANDARDS FOR PROPERTY SURVEYS IN GEORGIA AS SET FORTH IN THE RULES AND REGULATIONS OF THE GEORGIA BOARD OF REGISTRATION FOR PROFESSIONAL ENGINEERS AND LAND SURVEYORS AND AS SET FORTH IN O.C.G.A. SECTION 15-8-87.

Joseph P. Brewer Ga. RLS #3209 5-17-2019

NOW OR FORMERLY
 CITY OF SNELLVILLE
 P.B. Q, P.C. 266
 TAX ID: R5028 0040

NOW OR FORMERLY
 GWINNETT COUNTY PUBLIC LIBRARY
 D.B. 3945, PG. 214
 D.B. 4200, PG. 751
 TAX ID: R5028 002A



FLOOD NOTE:

NO PORTION OF THE SUBJECT PROPERTY IS IN A DESIGNATED SPECIAL FLOOD HAZARD AREA PER GWINNETT COUNTY FLOOD MAP NUMBER 1103005E, DATED 06-29-2006.



BOUNDARY SURVEY FOR:

NO.	DATE	REVISION
SURVEY INFORMATION		
DATE: 5/17/19	LAND LOT: 28	LAND DISTRICT: 5TH
COUNTY: GWINNETT	CITY: SNELLVILLE	DRAWN BY: BENNETT
JOB NUMBER: 19-187	SCALE: 1"=50'	DATE OF FIELD WORK: 4/5/2019

PREPARED BY: A Georgia Land Surveying Firm: LSF# 00105

acre
 PROFESSIONAL SURVEYORS

ACRE GROUP, INC.
 100 BOX 51, LOGANSVILLE, GEORGIA 30053

BRITT & CAMP, LLC