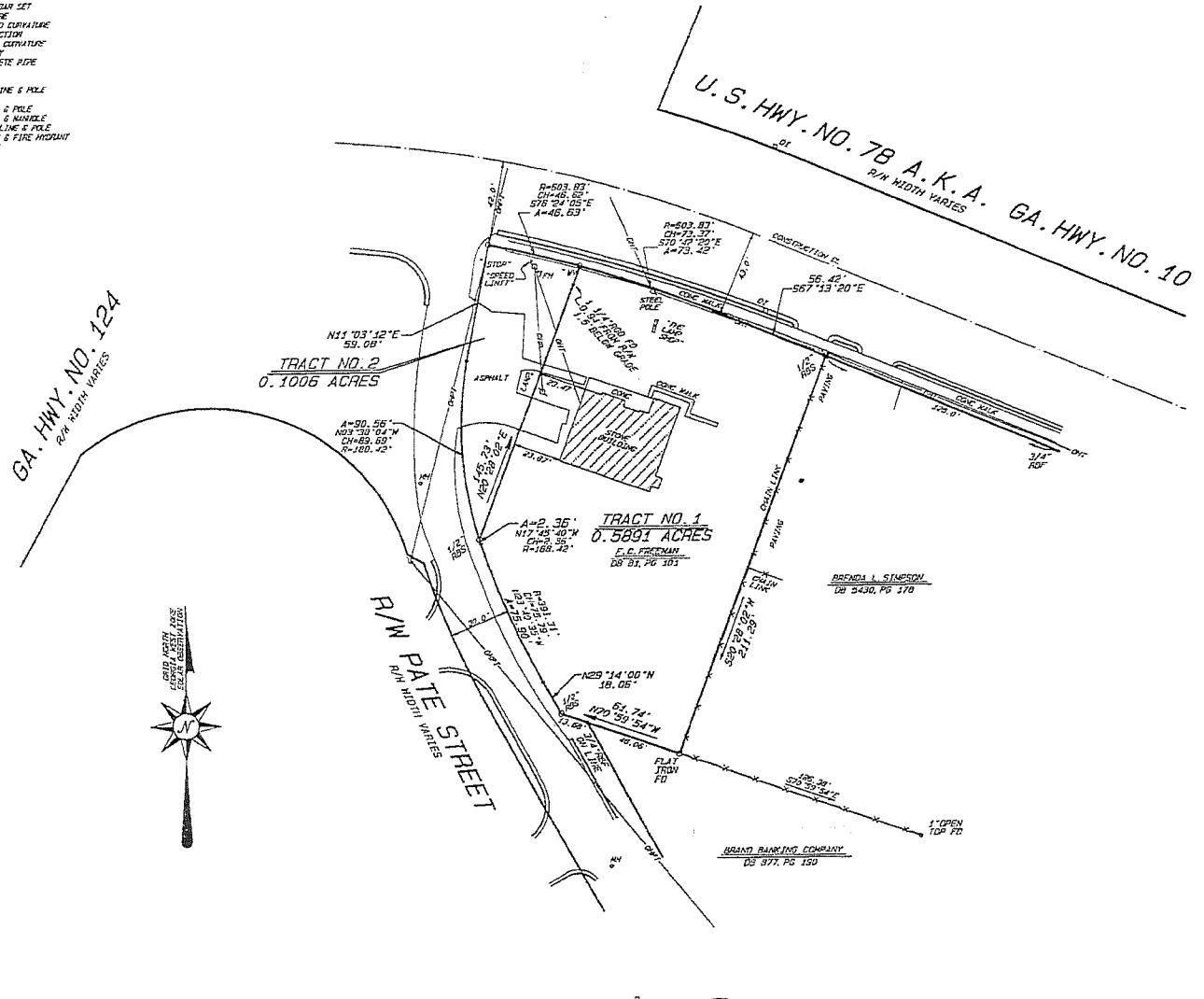


LEGEND:

- BL - BUILDING LINE
- BM - BENCH MARK
- CB - CATCH BASIN
- CD - CROSS DRAIN
- CL - CENTER LINE
- DA - DRAINAGE AREA
- DI - DRIVE INLET
- EL - ELEVATION
- FF - FINISHED FLOOR
- FM - FIRE MOUNT
- HC - HALF-BACK CURVE
- HW - HIGH WALL
- JL - JOINT LINE
- KL - LAND LOT LINE
- MT - MOUNTAIN
- MY - MANHOLE
- HC - HALF IN GAP
- OL - OPEN LINE
- OS - OVERTHROW
- RE - RETENTION LINE
- R - RADIUS
- RK - ROAD PAVEMENT
- RW - RIGHT-OF-WAY
- TH - TEST HOLE
- TL - TELEPHONE LINE & POLE
- US - UNDERGROUND
- MY - WATER VALVE
- DF - DEVELOPMENT RESTRICTION FLOOD
- RP - RESIDENTIAL DRAINAGE PLAN REQUIRED
- RS - RESIDENTIAL DRAINAGE STUDY REQUIRED
- CC - CONSTRUCTION EASEMENT (TEMPORARY)
- CF - CONCRETE FOOTING FOUND
- CM - CORRUGATED METAL PIPE
- CT - CURB TOP 15% FINISH
- DE - DRAINAGE EASEMENT
- DF - FLARED END SECTION
- FI - FLOOD INSURANCE RATE MAP
- HP - HOUSE LOCATION PLAN REQUIRED
- HT - HOLLOW TILE FOUND
- IM - 100 YEAR HIGH WATER LEVEL
- IS - INVERT ELEVATION
- IS - INCH-WALL SIGN IN-BAY SET
- IC - POINT OF CURVATURE
- IC - POINT OF COMPOUND CURVATURE
- IT - POINT OF INTERSECTION
- IR - POINT OF REVERSE CURVATURE
- IT - POINT OF TANGENCY
- IC - IMPROVED CONCRETE PILE
- IC - STREET EASEMENT
- IC - UTILITY EASEMENT
- IC - C-C - CABLE TV LINE & POLE
- IC - G - GAS LINE
- IC - W - WATER LINE & POLE
- IC - S - SEWER LINE & MANHOLE
- IC - T - TELEPHONE LINE & POLE
- IC - W - WATER LINE & FIRE MOUNT
- IC - W - WEDGE LINE

NOTES:

1. SURVEY PROCEDURES: THIS SURVEY BASED ON MEASUREMENTS OBTAINED USING AN INSTRUMENT CAPABLE OF READING ANGULAR MEASUREMENTS DIRECTLY TO A MINIMUM OF 5 SECONDS OF ARC AND LENGTH DIMENSIONS DIRECTLY TO 0.01 FEET.
2. THE FIELD DATA UPON WHICH THIS PLAT IS BASED HAS A MINIMUM PRECISION RATIO OF ONE FOOT IN 51,428 FEET, AND AN AVERAGE ANGULAR ERROR OF 0.5 SECONDS PER ANGLE POINT, AND HAS BEEN ADJUSTED BY LEAST SQUARES.
3. DATA SHOWN ON THIS PLAT HAS BEEN CALCULATED FOR CLOSURE, AND HAS A MINIMUM PRECISION RATIO OF ONE FOOT IN 576,000 FEET.
4. THIS PROPERTY IS LOCATED ON SHEET 2A OF THE "F.I.A. OFFICIAL FLOOD INSURANCE RATE MAP NO. 120102 DATED JULY 15, 1981, COVERING THE CITY OF SNELLVILLE, GWINNETT COUNTY, GEORGIA AND NO PORTION OF THIS PROPERTY LIES WITHIN AN AREA HAVING SPECIAL FLOOD HAZARDS.



SURVEY FOR:
FUTURE FEATURES, INC.

LAND LOT 26 OF THE 5TH DISTRICT
CITY OF SNELLVILLE
GWINNETT COUNTY, GEORGIA

0.6897 ACRES

DATE:	NO.	DATE	REVISION DESCRIPTION
NOV. 16, 2000			

SCALE: 1"=40'



IN MY OPINION THIS PLAT IS A CORRECT REPRESENTATION OF THE LAND PLATTED AND HAS BEEN PREPARED IN CONFORMITY WITH THE MINIMUM STANDARDS AND REQUIREMENTS OF LAW 1.

HANNAN, MEERKS & BAGWELL, SURVEYORS & ENGINEERS, INC.
HENSHER - SURVEYING AND MAPPING SOCIETY OF GEORGIA

HANNAN, MEERKS & BAGWELL, SURVEYORS & ENGINEERS, INC.
P.O. BOX 1307
253 HENRY DRIVE
LUMPKINVILLE, GEORGIA 30048
TELEPHONE: (770) 963-7181

WICK L. MEERKS... C.S. NO. 1497
J. RONALD HANNAN... C.S. NO. 1527
WILES H. HANNON... C.S. NO. 1528
CLAUDE BAGWELL... P.E. NO. 7049