

# Greenway Initiative gaining momentum

By Austin Shelton,  
City Planner

The City of Snellville continues to press forward with its Greenway Initiative.

Personal automobiles will continue to be the main form of transportation within and through Snellville for the foreseeable future. However, City staff and leaders recognize the importance of giving residents and businesses options when it comes to recreation and transportation, and are committed to meeting the growing demand for more bicycle and pedestrian friendly facilities throughout the city.

## Greenway Master Plan

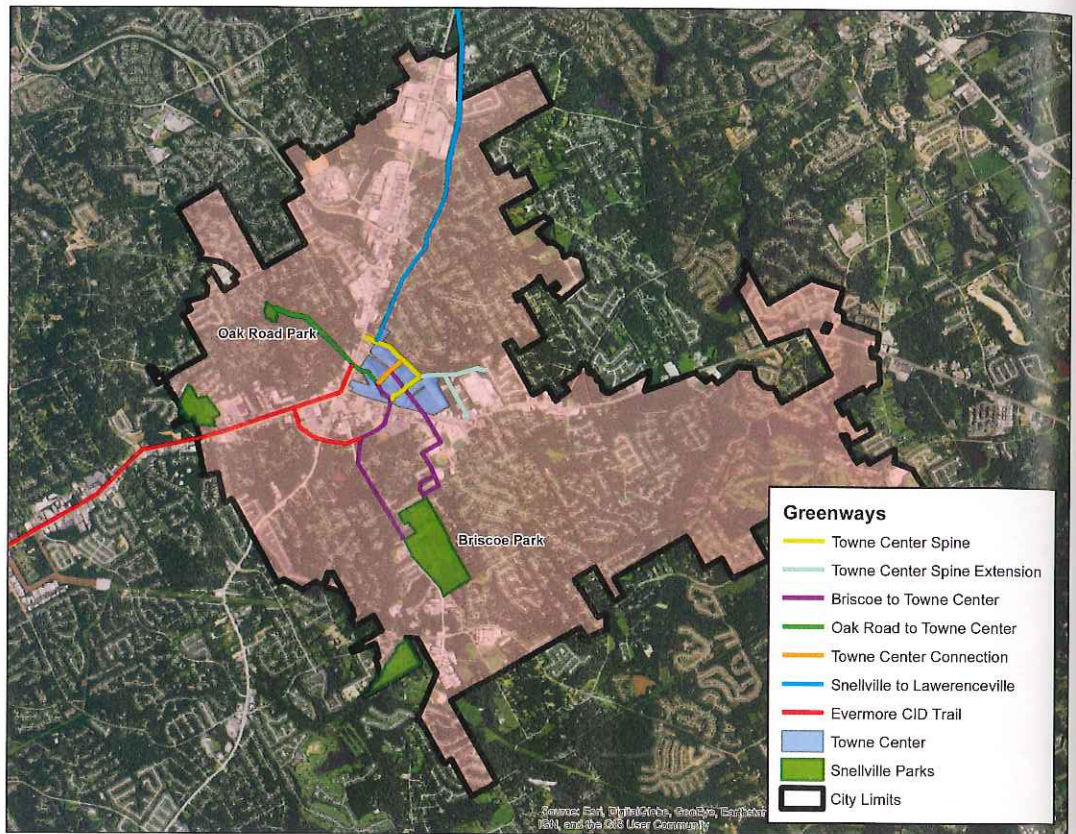
A draft Greenway Master Plan for the city is in the final stages of development. This plan includes four projects that City staff deem essential projects to lay the foundation for a strong, comprehensive network of trails and greenways within the city limits. Three of these projects will most likely be finalists on Gwinnett County's list of projects that can be feasibly completed by 2040. The final one is a Snellville-centric project designed to complement the Towne Center.

These projects are (from shortest to longest):

**Towne Center Spine** – a .7-mile trail running parallel to Wisteria Drive along a mostly dry creek bed. This greenway will serve as a “border” more or less to the rear of the Towne Center, and will provide another connection from City Hall and the Senior Center to North Road, Scenic Highway and the neighborhoods abutting the north end of Snellville’s downtown.

**Oak Road Park to Briscoe Park** – This 2.2-mile greenway is meant to connect two of the City’s parks to each other and to the Towne Center, providing a mixed recreational and transportation corridor for residents throughout the city.

**Snellville to Lawrenceville** – 4.5 miles is the approximate distance between the city centers of Snellville and Lawrenceville; a distance that Gwinnett County and the City of Snellville wants to see bridged. Though the final route is not yet finalized, the plan is for this greenway to largely follow North Road and Old Snellville Highway, which allows cyclists and pedestrians to travel on quieter roads away from the fast and heavy traffic on Hwy 124 / Scenic Highway. It also serves to provide additional connection



to Alexander Park, just outside Snellville’s city limits.

**Main Street West / US-78** – At almost 5 miles in length, this is the longest and most ambitious of greenways being planned by the City and Gwinnett County for the area. Though obviously we are limited by the county line, the eventual goal is to give Snellville and the South Gwinnett area a connection to the existing trail network around Stone Mountain. This is a key connection for the future, as it links the growing Gwinnett County greenway network to the web of trails and greenways in the rest of the Atlanta metro and beyond.

## Next Steps

The next step for the Greenway Master Plan is to have it formally adopted by the Mayor Pro-Tem and City Council. Once adopted, the City can begin discussion on what it will look like to realize this plan. While we are obviously limited by our jurisdictional boundaries, there are things the City can do to expedite construction within our own borders.

An example might be amending sidewalk requirements for designated greenway routes. 8 to 10 feet is considered the minimum width for a greenway, with 12 feet preferred for higher-use areas. Another would be to work with Gwinnett County to receive funding from one of their designated sources, such as SPLOST funds. And of course, continued cooperation between Parks and Recreation, Planning and Development, Snellville residents and other essential parties is key to making this plan a reality.

Snellville, Where Everybody’s Proud to be Somebody