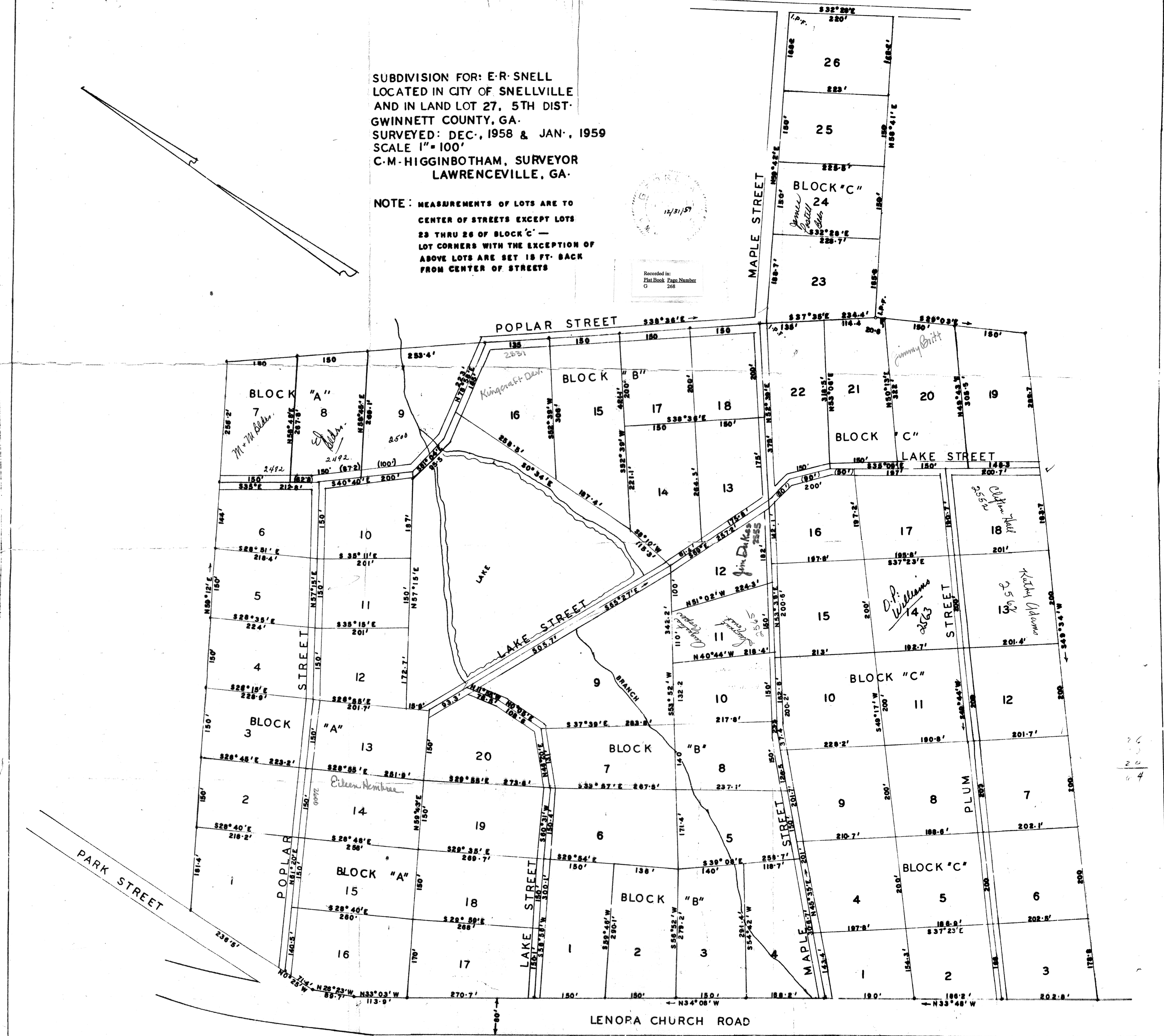


SUBDIVISION FOR: E-R SNELL  
 LOCATED IN CITY OF SNELLVILLE  
 AND IN LAND LOT 27, 5TH DIST.  
 GWINNETT COUNTY, GA.  
 SURVEYED: DEC., 1958 & JAN., 1959  
 SCALE 1" = 100'  
 C-M-HIGGINBOTHAM, SURVEYOR  
 LAWRENCEVILLE, GA.

NOTE: MEASUREMENTS OF LOTS ARE TO  
 CENTER OF STREETS EXCEPT LOTS  
 23 THRU 26 OF BLOCK "C" —  
 LOT CORNERS WITH THE EXCEPTION OF  
 ABOVE LOTS ARE SET 15 FT. BACK  
 FROM CENTER OF STREETS

Recorded in:  
 Plat Book Page Number  
 C 26



26  
 20  
 44