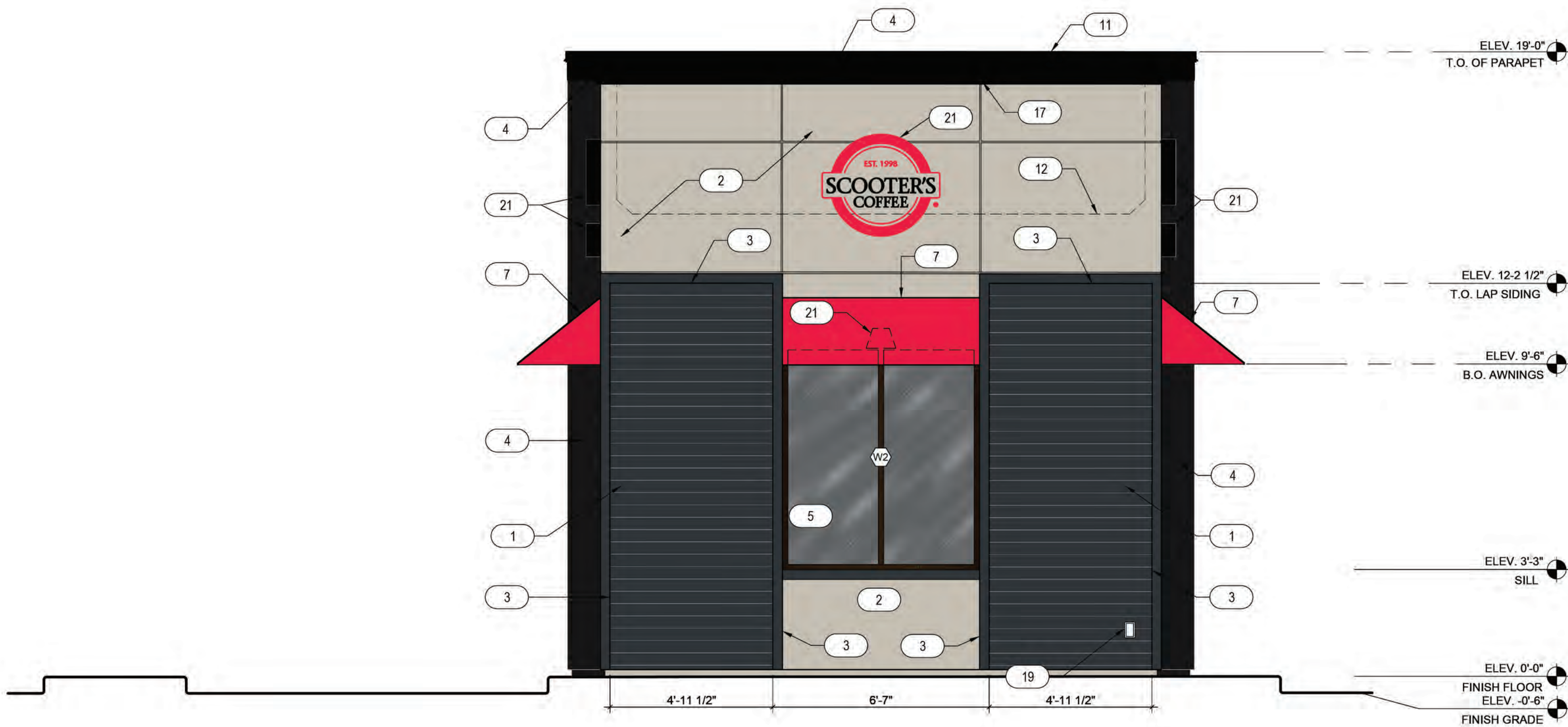
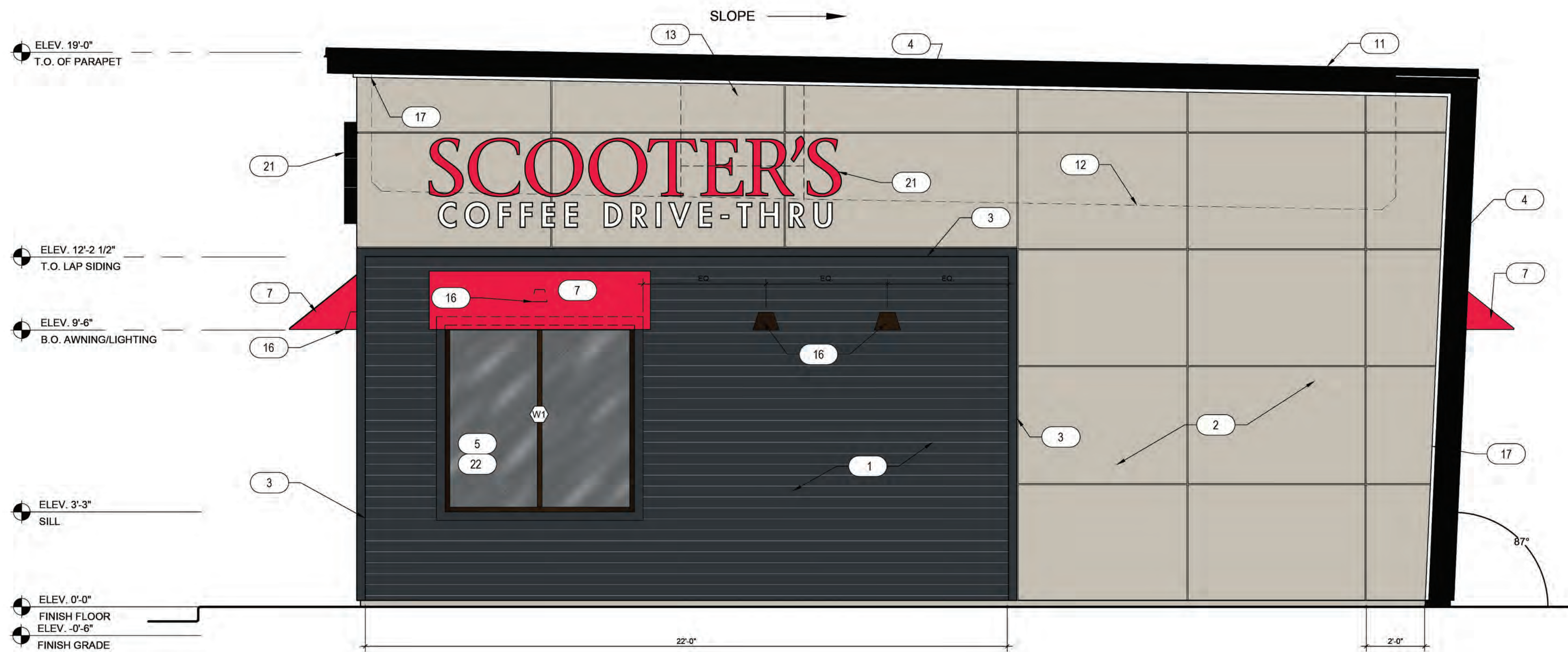


THIS DRAWING AND ITS CONTENTS ARE THE COPYRIGHTED PROPERTY OF FM GROUP INC. USE THEREOF IS LIMITED TO THE SPECIFIC PROJECT AND SITE SET FORTH ABOVE, AND MAY NOT BE OTHERWISE USED OR REPRODUCED, IN WHOLE OR IN PART, WITHOUT THE WRITTEN PERMISSION OF FM GROUP INC. THE ARCHITECT. THIS DRAWING IS TO BE RETURNED UPON REQUEST.



2 EXTERIOR ELEVATIONS
SCALE: 3/8" = 1'-0"



1 EXTERIOR ELEVATIONS
SCALE: 3/8" = 1'-0"

KEYNOTES

1. HARDIE PLANK HZ10 LAP SIDING CEDARMILL 6-1/4", SEE HARDIE DETAIL SHEET A6.5 - COLOR: SHERWIN WILLIAMS SW6992 INKWELL EGGSHELL FINISH
2. HARDIE REVEAL PANEL SYSTEM WZ10 - SMOOTH FINISH, SEE HARDIE DETAIL SHEET A6.5 - COLOR: SW 1015 SKYLINE STEEL
3. 3 1/2" HARDIE TRIM, SEE HARDIE DETAIL SHEET A6.5 - COLOR: SHERWIN WILLIAMS SW6992 INKWELL EGGSHELL FINISH
4. 20 GAUGE METAL ACCENTS AND SOFFITS - COLOR: BLACK
5. INSULATED DARK BRONZE ALUMINUM WINDOWS WITH DUAL PANE TEMPERED GLASS
6. QUICKSERVE 48X48 WINDOW - COLOR: DARK BRONZE
7. AWNING BY OTHERS - COLOR: RED
8. INSULATED HOLLOW METAL DOOR AND FRAME - COLOR: SHERWIN WILLIAMS SW6992 INKWELL EGGSHELL FINISH
9. PEEP HOLE, BY DOOR MANUFACTURER
10. DOOR BELL
11. 20 GAUGE METAL PARAPET CAP
12. LINE OF ROOF BEYOND
13. ROOF TOP UNIT BEYOND, SEE MECHANICAL DRAWINGS
14. ROOF SCUPPER AND DOWNSPOUT, SEE DETAIL 8/A6.3
15. MAILBOX BY OWNER
16. WALL MOUNTED LIGHT FIXTURE, SEE ELECTRICAL DRAWINGS
17. LED LIGHT BAND, SEE ELECTRICAL DRAWINGS
18. SES PANEL, SEE ELECTRICAL DRAWINGS
19. ELECTRICAL OUTLETS, SEE ELECTRICAL DRAWINGS
20. HOSE BIBB, SEE PLUMBING DRAWINGS
21. SIGNAGE BY OTHERS, UNDER A SEPARATE PERMIT
22. SPANDREL GLASS

Exterior elevations represent Scooter's prototypical standards and will be modified to conform to City of Sneelville's materials and color requirements at time of building plan submittal.



PROJECT ADDRESS:

REVISIONS:

TITLE:
EXTERIOR
ELEVATIONS

DATE:

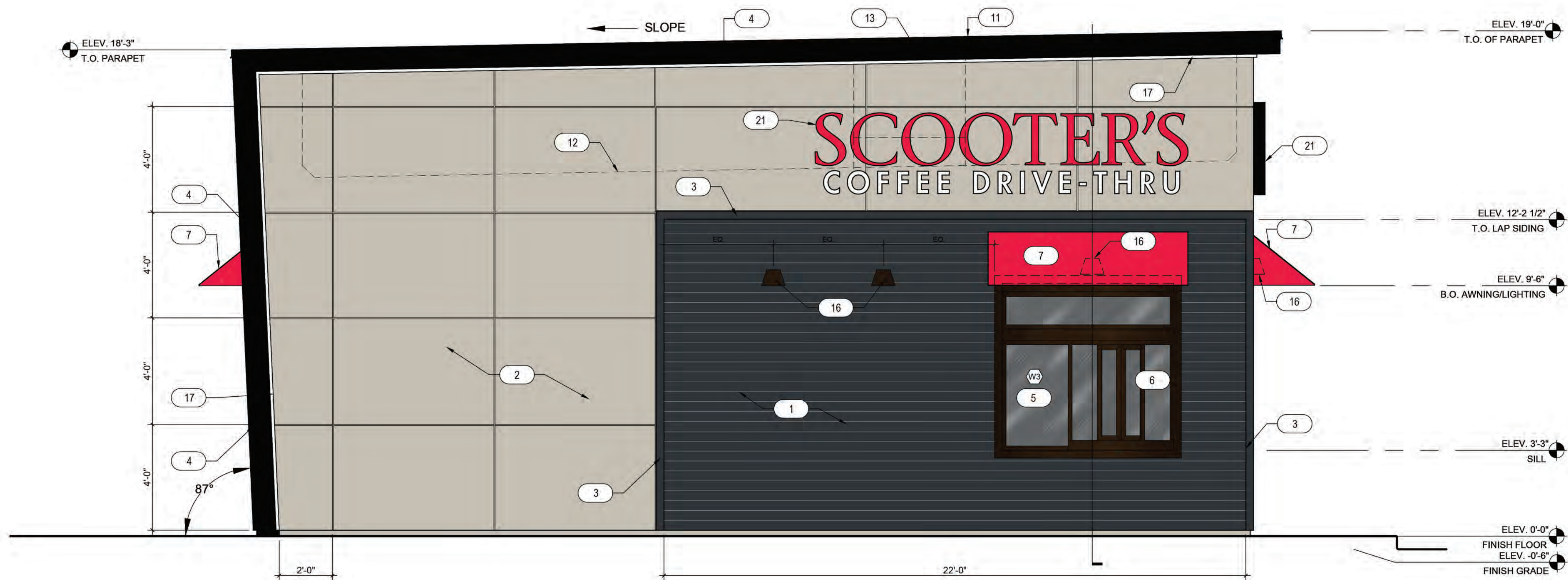
PROJECT NO.

- ☐ DESIGN DEVELOPMENT
☒ PERMIT SUBMITTAL
☐ BID PACKAGE
☐ CONSTRUCTION ISSUE

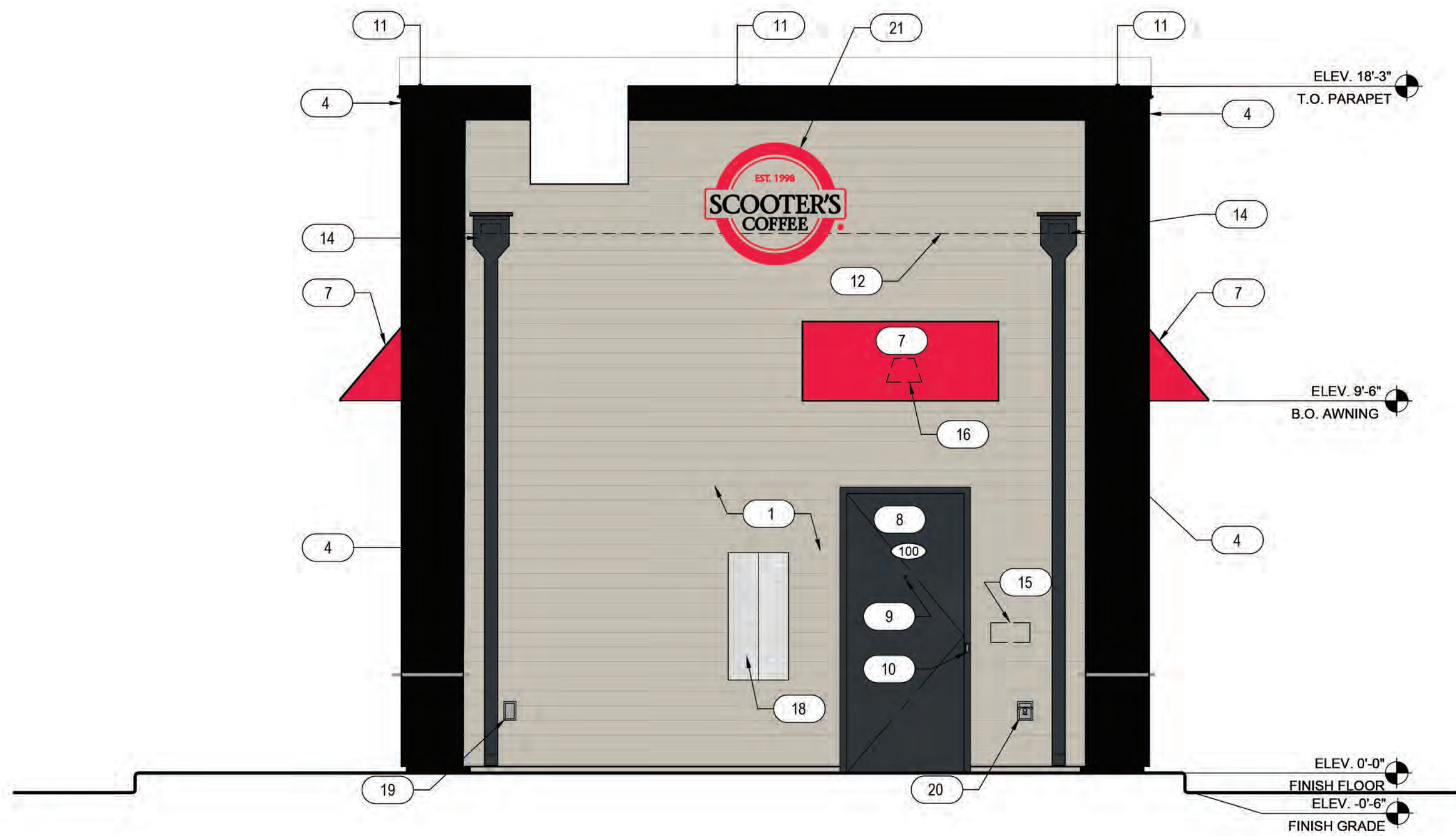
SHEET NO.

A3.2

THIS DRAWING AND ITS CONTENTS ARE THE COPYRIGHTED PROPERTY OF FM GROUP INC. USE THEREOF IS LIMITED TO THE SPECIFIC PROJECT AND SITE SET FORTH ABOVE, AND MAY NOT BE OTHERWISE USED OR REPRODUCED, IN WHOLE OR IN PART, WITHOUT THE WRITTEN PERMISSION OF FM GROUP INC., THE ARCHITECT. THIS DRAWING IS TO BE RETURNED UPON REQUEST.



2 EXTERIOR ELEVATIONS
SCALE: 3/8" = 1'-0"



1 EXTERIOR ELEVATIONS
SCALE: 3/8" = 1'-0"

KEYNOTES

X

1. HARDIE PLANK HZ10 LAP SIDING CEDARMILL 6-1/4", SEE HARDIE DETAIL SHEET A6.5 - COLOR: SHERWIN WILLIAMS SW6992 INKWELL EGGSHELL FINISH
2. HARDIE REVEAL PANEL SYSTEM WZ10 - SMOOTH FINISH, SEE HARDIE DETAIL SHEET A6.5 - COLOR: SW 1015 SKYLINE STEEL
3. 3 1/2" HARDIE TRIM, SEE HARDIE DETAIL SHEET A6.5 - COLOR: SHERWIN WILLIAMS SW6992 INKWELL EGGSHELL FINISH
4. 20 GAUGE METAL ACCENTS AND SOFFITS - COLOR: BLACK
5. INSULATED DARK BRONZE ALUMINUM WINDOWS WITH DUAL PANE TEMPERED GLASS
6. QUICKSERVE 48X48 WINDOW - COLOR: DARK BRONZE
7. AWNING BY OTHERS - COLOR: RED
8. INSULATED HOLLOW METAL DOOR AND FRAME - COLOR: SHERWIN WILLIAMS SW6992 INKWELL EGGSHELL FINISH
9. PEEP HOLE, BY DOOR MANUFACTURER
10. DOOR BELL
11. 20 GAUGE METAL PARAPET CAP
12. LINE OF ROOF BEYOND
13. ROOF TOP UNIT BEYOND, SEE MECHANICAL DRAWINGS
14. ROOF SCUPPER AND DOWNSPOUT, SEE DETAIL 8/A6.3
15. MAILBOX BY OWNER
16. WALL MOUNTED LIGHT FIXTURE, SEE ELECTRICAL DRAWINGS
17. LED LIGHT BAND, SEE ELECTRICAL DRAWINGS
18. SES PANEL, SEE ELECTRICAL DRAWINGS
19. ELECTRICAL OUTLETS, SEE ELECTRICAL DRAWINGS
20. HOSE BIBB, SEE PLUMBING DRAWINGS
21. SIGNAGE BY OTHERS, UNDER A SEPARATE PERMIT

Exterior elevations represent Scooter's prototypical standards and will be modified to conform to City of Sneelville's materials and color requirements at time of building plan submittal.



PROJECT ADDRESS:

REVISIONS:

TITLE:
EXTERIOR
ELEVATIONS

DATE:

PROJECT NO.

- ☐ DESIGN DEVELOPMENT
☒ PERMIT SUBMITTAL
☐ BID PACKAGE
☐ CONSTRUCTION ISSUE

SHEET NO.

A3.1