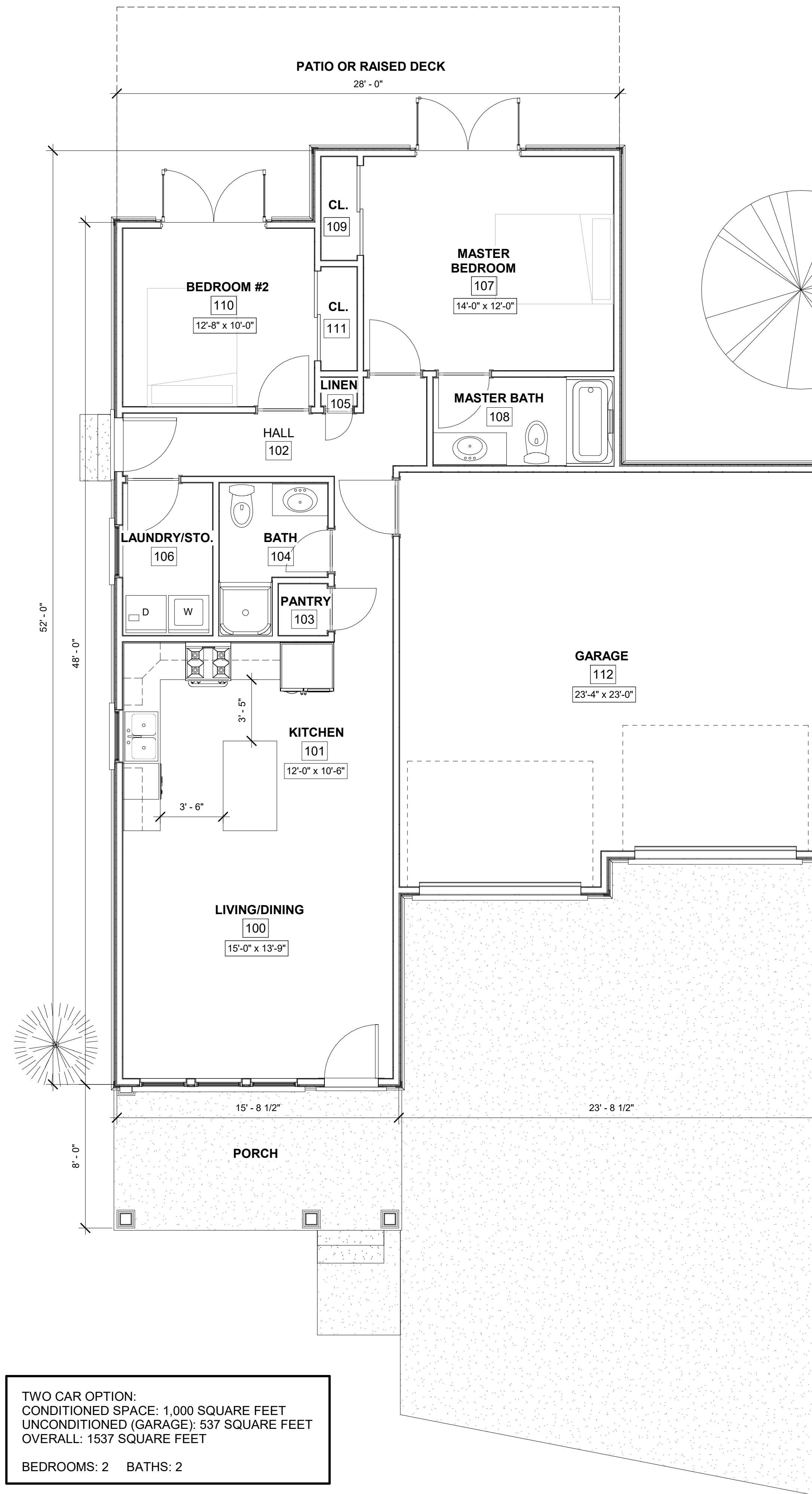


ONE CAR DESIGN:  
 CONDITIONED SPACE: 1,000 SQUARE FEET  
 UNCONDITIONED (GARAGE): 276 SQUARE FEET  
 OVERALL: 1276 SQUARE FEET

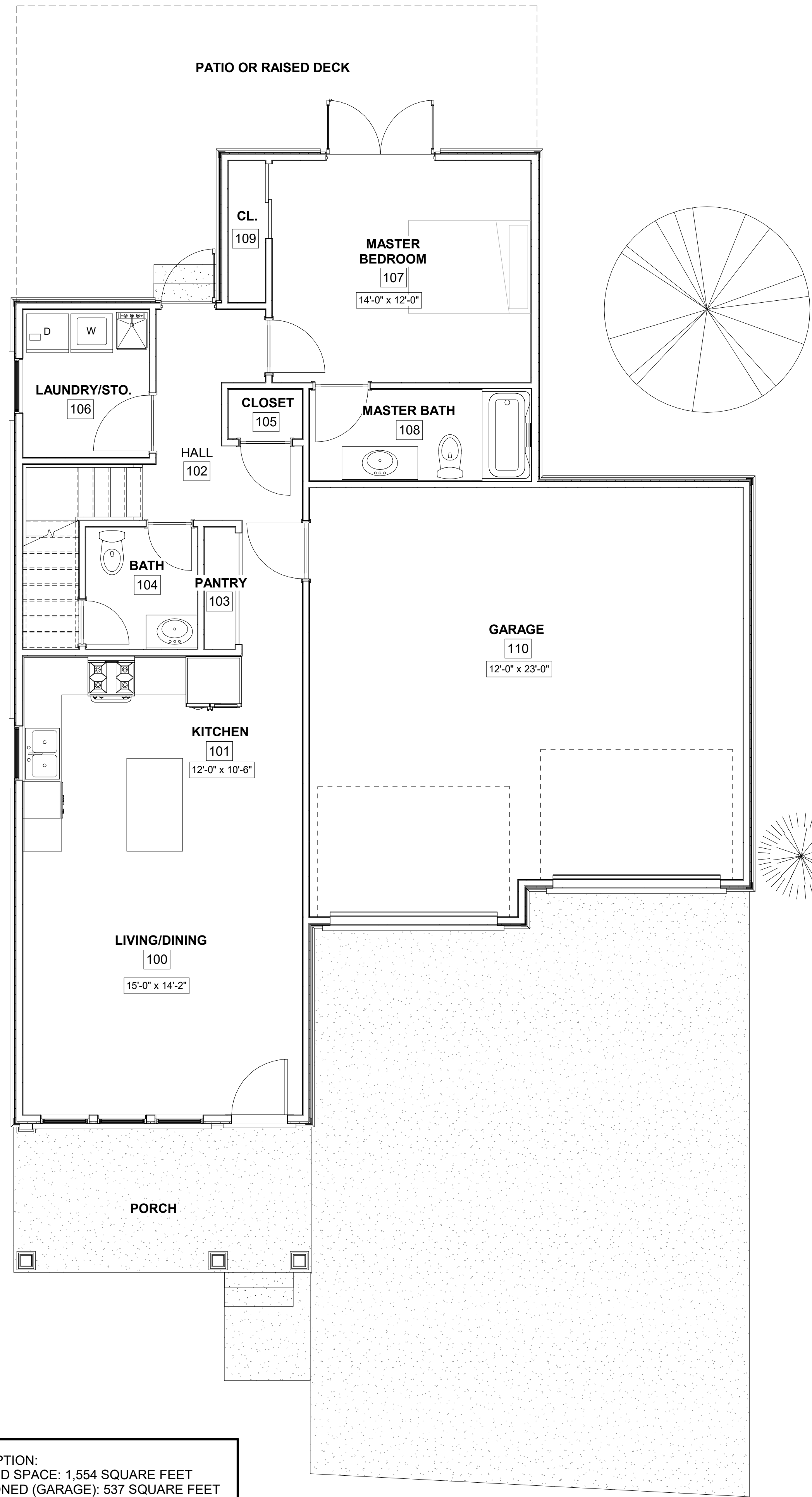
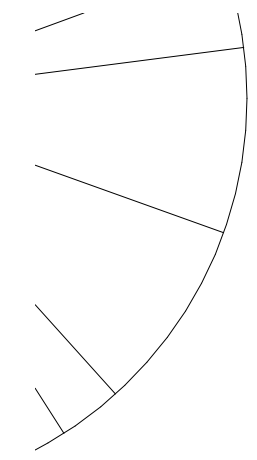
BEDROOMS: 2 BATHS: 2



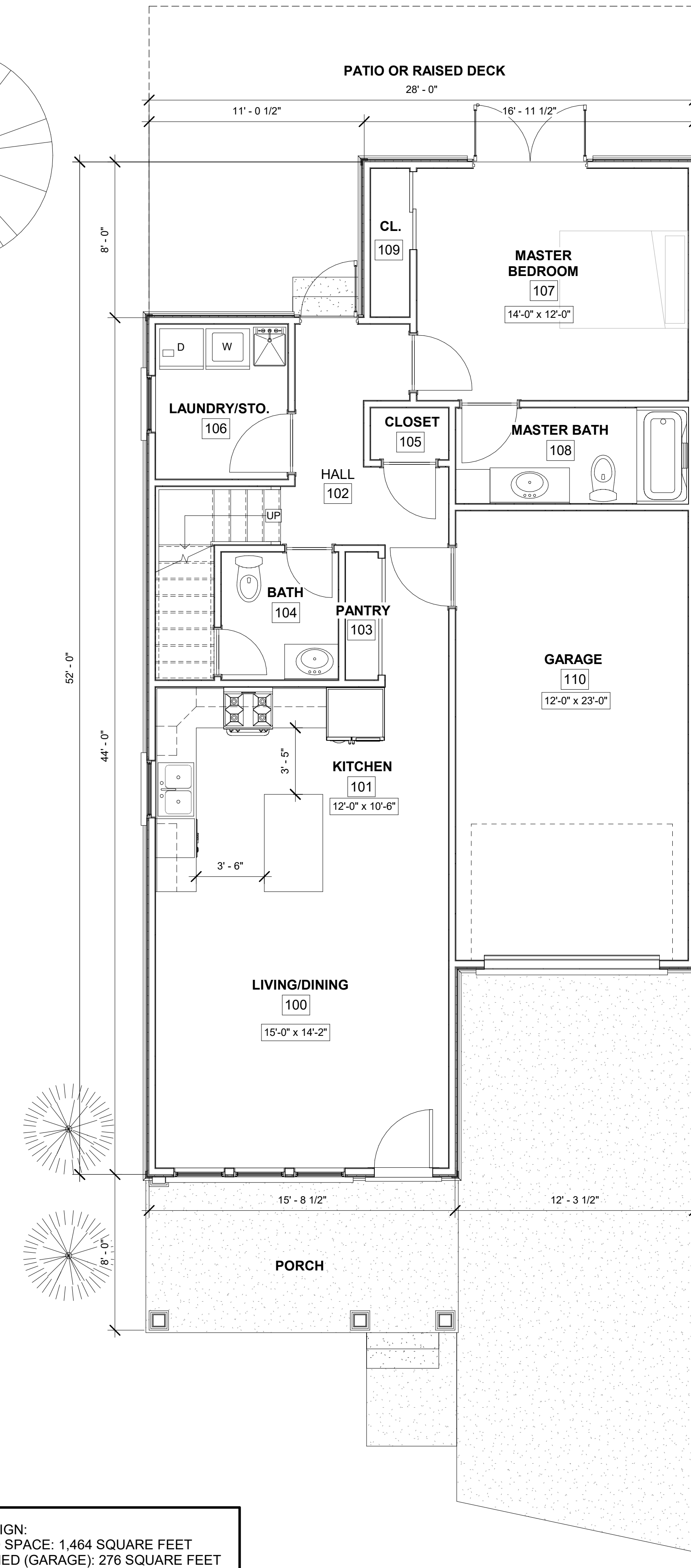
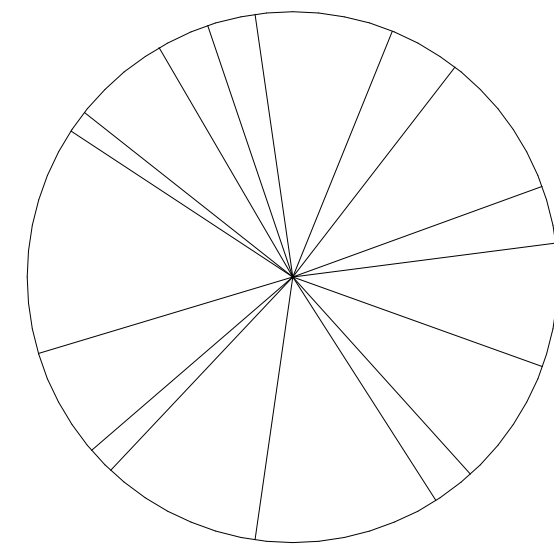
TWO CAR OPTION:  
 CONDITIONED SPACE: 1,000 SQUARE FEET  
 UNCONDITIONED (GARAGE): 537 SQUARE FEET  
 OVERALL: 1537 SQUARE FEET

BEDROOMS: 2 BATHS: 2

SHEET NO:	A101		
	FLOOR PLAN - ONE STORY OPTIONS		
CLIENT:	BRITT AND CAMP LLC		
DESCRIPTION:	NEW HOME OPTIONS		
SITE ID:	PROJECT NUMBER:	BCL020000229	
DRAWN BY:	DATE:	REVIEWED BY:	DATE ISSUED:
LENORA CHUCH ROAD SNELVILLE, GA		PREPARED BY:	
AISI INFRASTRUCTURE		DATE:	
1111 CAMBRIDGE SQUARE, SUITE C		06/19/20	
ALPHARETTA, GEORGIA 30009		DATE	
PHONE (770) 354-4500		REV	
		DESCRIPTION	
		BY	

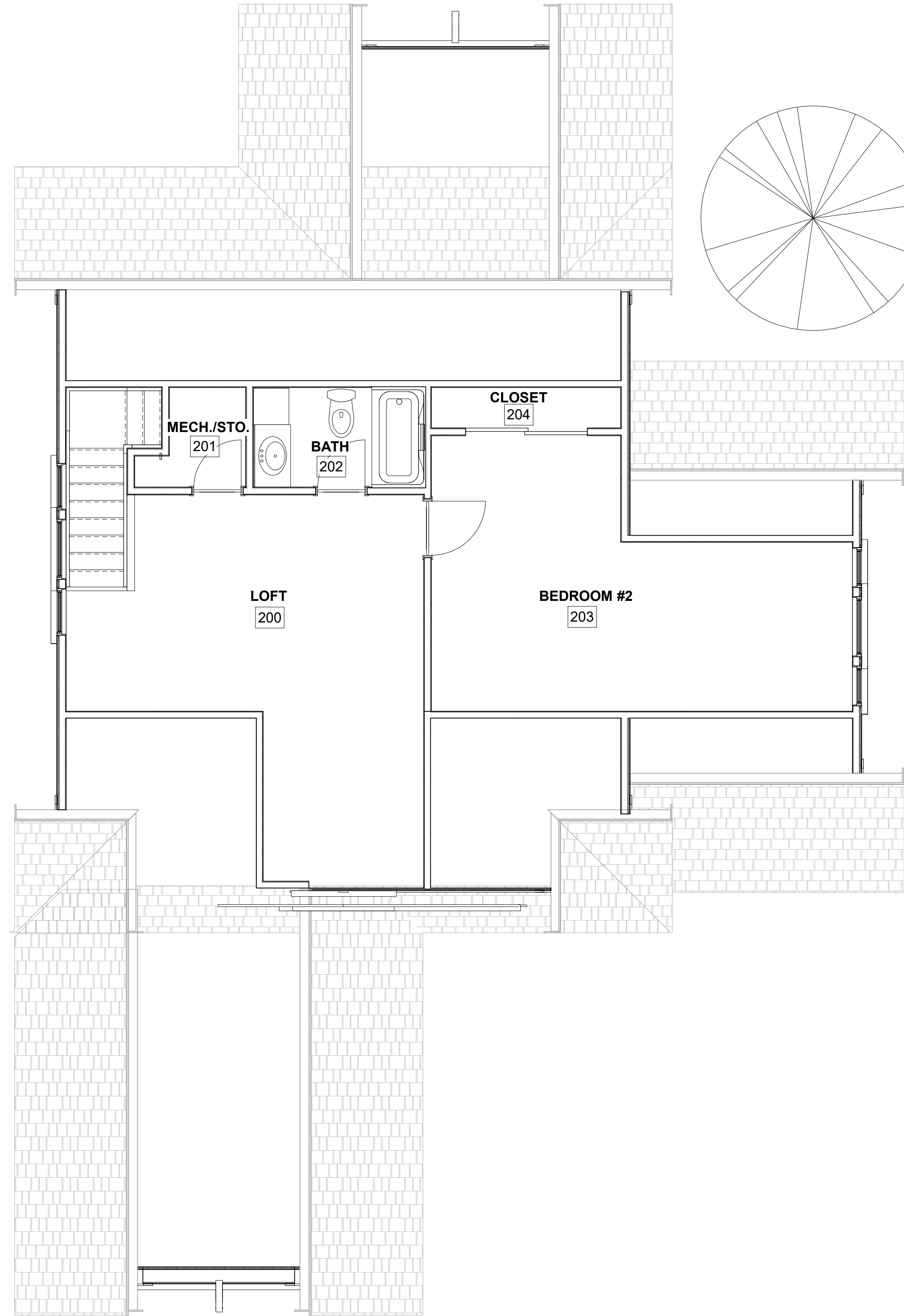
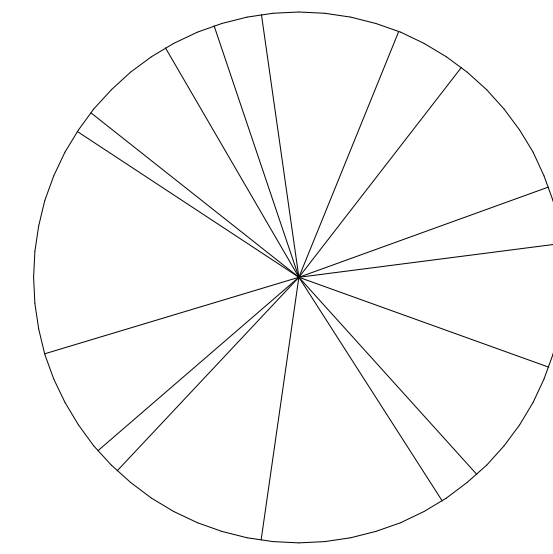
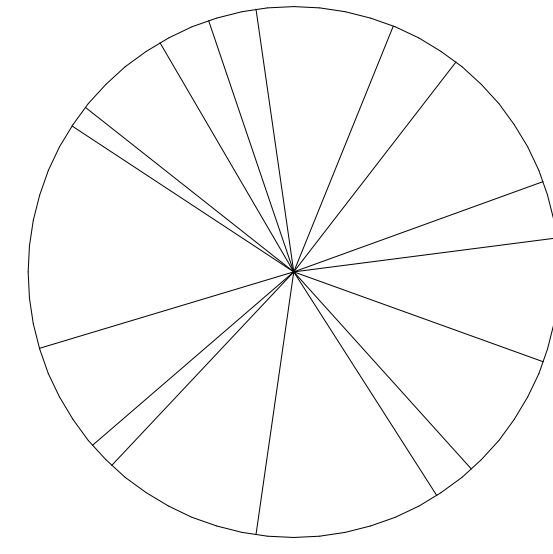
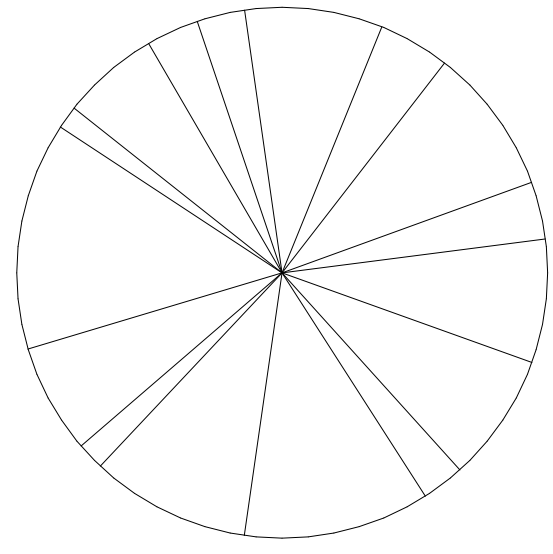
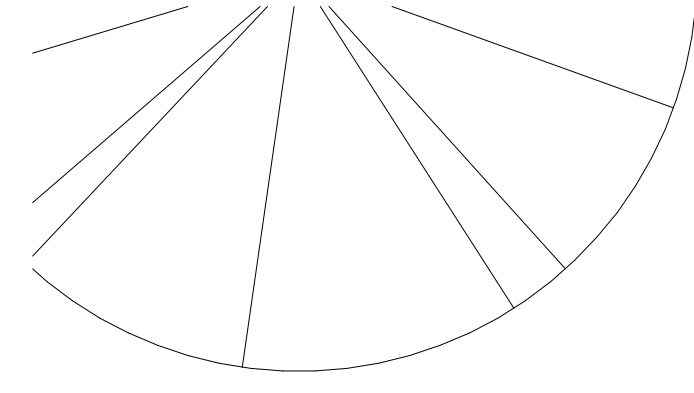


TWO CAR OPTION:  
 CONDITIONED SPACE: 1,554 SQUARE FEET  
 UNCONDITIONED (GARAGE): 537 SQUARE FEET  
 OVERALL: 2,091 SQUARE FEET  
 BEDROOMS: 2 BATHS: 2.5

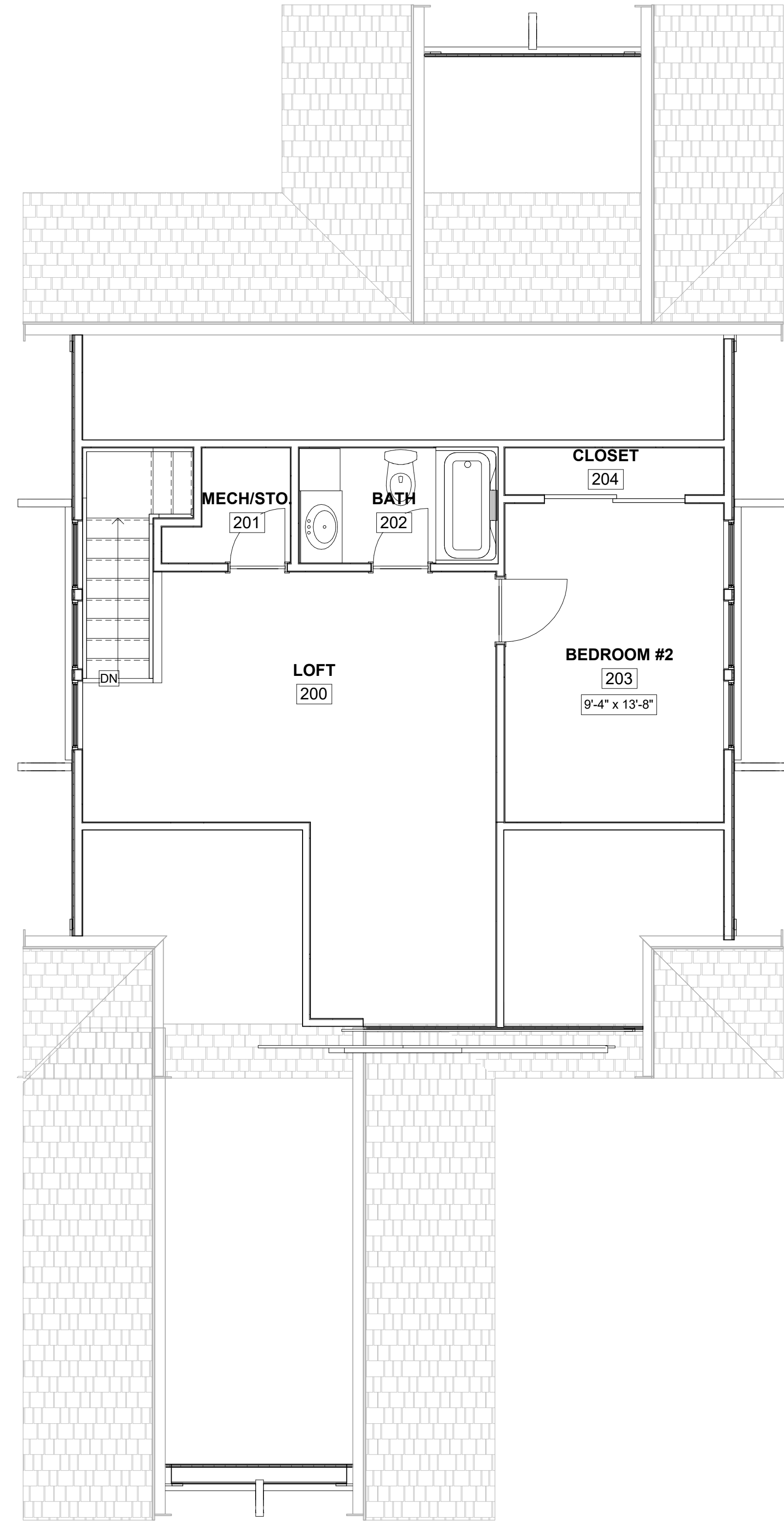


ONE CAR DESIGN:  
 CONDITIONED SPACE: 1,464 SQUARE FEET  
 UNCONDITIONED (GARAGE): 276 SQUARE FEET  
 OVERALL: 1,740 SQUARE FEET  
 BEDROOMS: 2 BATHS: 2.5

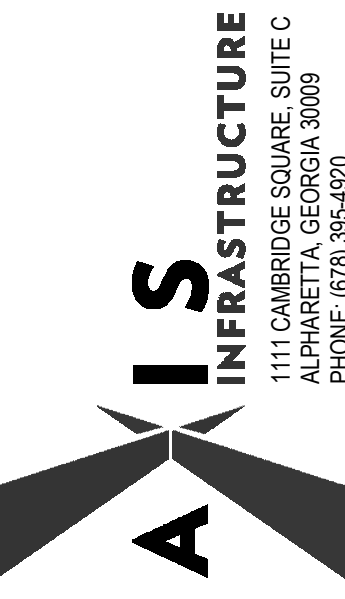
SHEET NO:	CLIENT: BRITT AND CAMP LLC	DESCRIPTION:	PROJECT NUMBER: BCL020000229
	DRAWN BY:	REVIEWED BY:	DATE ISSUED:
NEW HOME OPTIONS	LENORA CHUCH ROAD SNELVILLE, GA	PREPARED BY:	
	 1111 CAMBRIDGE SQUARE, SUITE C ALPHARETTA, GEORGIA 30009 PHONE (770) 354-4500		
DATE	06/26/20	REV	DESCRIPTION
BY			



TWO CAR OPTION:  
 CONDITIONED SPACE: 1,554 SQUARE FEET  
 UNCONDITIONED (GARAGE): 537 SQUARE FEET  
 OVERALL: 2091 SQUARE FEET  
 BEDROOMS: 2 BATHS: 2.5



ONE CAR DESIGN:  
 CONDITIONED SPACE: 1,464 SQUARE FEET  
 UNCONDITIONED (GARAGE): 276 SQUARE FEET  
 OVERALL: 1740 SQUARE FEET  
 BEDROOMS: 2 BATHS: 2.5

SHEET NO:	CLIENT: BRITT AND CAMP LLC	DRAWN BY:	DATE	REVIEWED BY:	DATE ISSUED:	PROJECT NUMBER: BCL02000229	SITE ID	DESCRIPTION:	REV	DATE	DESCRIPTION	BY
NEW HOME OPTIONS										06/26/20	DATE	
LENORA CHUCH ROAD SNELVILLE, GA												
 <b>AIS INFRASTRUCTURE</b> 1111 CAMBRIDGE SQUARE, SUITE C ALPHARETTA, GEORGIA 30009 PHONE (770) 354-4500												
PREPARED BY:												
A103 SECOND FLOOR PLAN - TWO STORY OPTIONS												