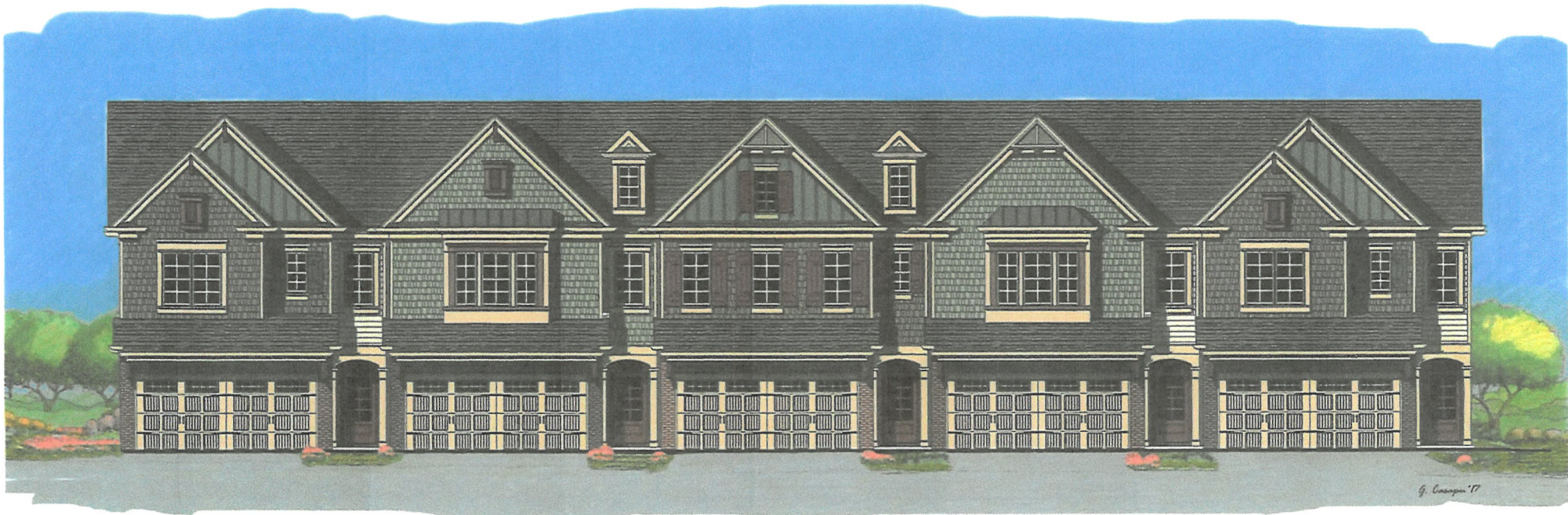


The townhomes will be a minimum of 1,800 square feet. All units will include a two-car garage and have attractive architecture. Front elevations will consist primarily of brick, stacked stone, or shake with fiber cement siding accents. The sides and rear of the townhomes will feature a 3' brick or stacked stone water table, with the remainder being fiber cement siding. Roofs will be Asphalt shingles.

RECEIVED

APR 07 2022

CITY OF SNELLVILLE
PLANNING & DEVELOPMENT



24' x 50' Front Entry Product Townhome



LEFT SIDE ELEVATION

G. Casapu '17



REAR ELEVATION

G. Casapu '17



RIGHT SIDE ELEVATION

'17

24'x 50' Front Entry Product
Typical Side & Rear El.

RECEIVED

APR 07 2022

CITY OF SNELLVILLE
PLANNING & DEVELOPMENT