

JORDAN

APPROX. 2,802 SQ. FT. | TWO-STORY HOME | 4-6 BEDROOMS | 2.5-3 BATHROOMS | 2 BAY GARAGE



ELEVATION A1



ELEVATION A2



ELEVATION B1



ELEVATION B2



ELEVATION C1



ELEVATION C2

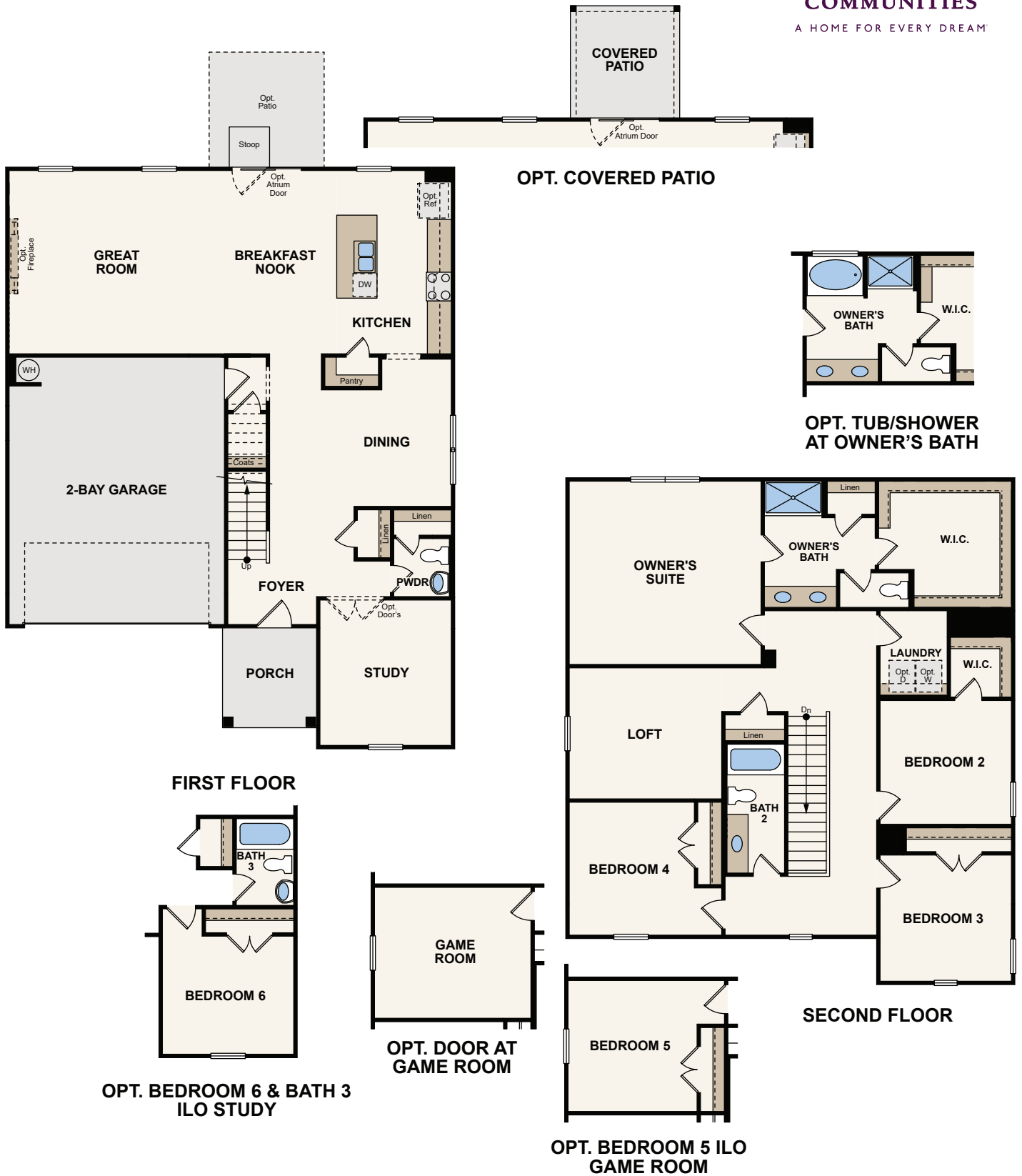


ELEVATION C3



Price, plans and terms are effective on the date of publication and subject to change without notice. Depictions of homes or other features are conceptual. Decorative items and other items shown may be decorator suggestions that are not included in the purchase price and availability may vary. Persons in photos do not reflect racial preference and housing is open to all without regard to race, color, religion, sex, handicap, familial status, or national origin. ©2020 Century Communities.

Floor Plans



Price, plans and terms are effective on the date of publication and subject to change without notice. Depictions of homes or other features are conceptual. Decorative items and other items shown may be decorator suggestions that are not included in the purchase price and availability may vary. Persons in photos do not reflect racial preference and housing is open to all without regard to race, color, religion, sex, handicap, familial status, or national origin. ©2020 Century Communities.